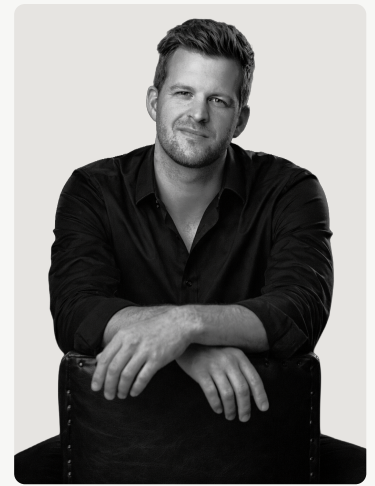


# René Jessen

## E-COMMERCE SYSTEMS & MARKETPLACE SPECIALIST

Danish localization is prepared in the content model. Full translated content can be added without refactoring routes, PDF generation, or page composition.



CASES

Scan QR



CONTACT

LinkedIn only - scan QR

### ABOUT

This locale currently reuses the English-first positioning strategy while the full Danish translation is being prepared in the CMS.

The important architectural point is that localized content already has a stable model, route, and PDF output.

### CORE STRENGTHS

- No refactor is needed to add Danish later.
- Shared content structures reduce maintenance.
- PDF and page output stay aligned.

### TOOLS & SYSTEMS

#### CMS MODEL

Localized fields, Reusable sections, SEO metadata

## EXPERIENCE

### **Localized experience placeholder**

Ready

Add Danish content in CMS · Denmark

The route and data model exist. The full translation can be added later.

- Structured content source
  - Shared PDF flow
  - No page refactor required
- 

## SELECTED FOCUS AREAS

### **Localized content modeling**

Shared fields and route composition make future translations straightforward.